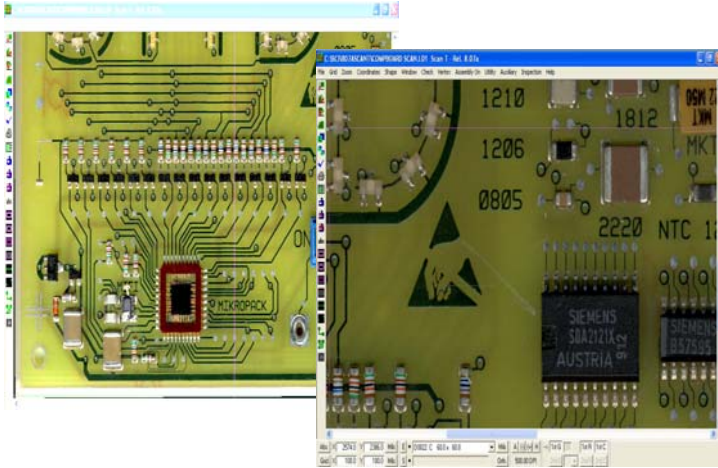


ScanEYE INSPECT™

Component Placement Inspection (CPI)



WHAT IS ScanEYE INSPECT?

ScanEYE INSPECT CPI provides a simple and user-friendly alternative to inaccurate and time-consuming manual component placement inspection methods or expensive, high-end AOI systems.

ScanEYE INSPECT CPI uses a simple Windows user interface integrated with an automatic conveyor and image-processing unit. This combination allows 100% inspection of component placement on PCBs after placement or after reflow.

HOW DOES ScanEYE INSPECT CPI WORK?

ScanEYE INSPECT's integration within the production line provides 100% verification of absence / presence of components on PCB's.

Each PCB or substrate is shuttled from the placement machine or oven into ScanEYE INSPECT CPI for 100% inspection. The PCB is then automatically inspected. The PCB is either accepted or rejected. No more surprises!

QUICK & SIMPLE PROGRAMMING

ScanEYE INSPECT is quickly programmed from a golden board.

INCREASED YIELD & IMPROVED OVERALL EQUIPMENT EFFICIENCY

ScanEYE INSPECT CPI's powerful inspection process increases product yield by ensuring all components are placed. Thus, eliminating costly rework at later points in the process or warranty returns from products that do not work in the field.

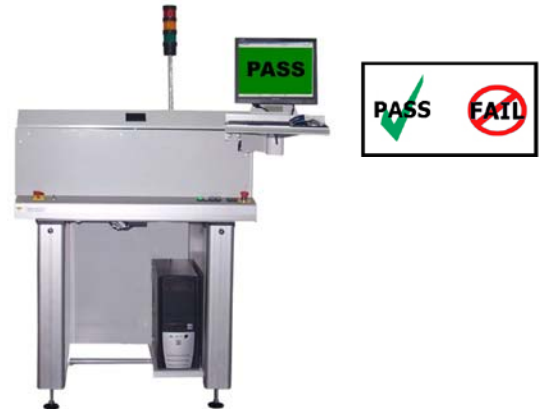
Missing components are now automatically detected. Problems are detected and eliminated before the end of the line! Fix root cause of problem before many products are created with the same defect.

SIMPLICITY

ScanEYE INSPECT CPI set up is fast and easy. In production, each board passes through on the conveyor; it is automatically aligned and checked for accuracy with a PASS or FAIL inspection in seconds.

WHY USE ScanEYE INSPECT?

- **Mandatory:** 100% automatic inspection of components after placement or reflow.
- **Security:** Confirm component absence / presence.
- **Necessity:** Detect errors and fix root cause
- **Flexibility:** Inspect a wide variety of component types.



CONVEYOR MODULE

System Specifications

- Maximum Board Size: 18.1" X 20" (460mm X 508mm)
- Maximum Inspection Area: 17.0" X 20" (432mm X 508mm)
- Minimum Board Size: 2" X 2" (51mm X 51mm)
- Minimum Board Thickness: 0.020" (.51mm)
- Resolution: 200/300/400/600/800/1000/1600 dpi

PC Specifications

- Pentium (1GHz or higher) Personal Computer
- 60 GB HD, 512 MB RAM
- CD-ROM (CD-RW for archive purposes)
- Monitor (17" or larger)
- Win 98SE/Me/2000/XP – Requires: 2 available USB ports

Footprint

- Length: 41.7" (1,060mm)
- Width: 42.9" (1,090mm)
- Height: 84.6" (2,150mm) - To tip of Tower Light.
- Weight: 330 lbs (150kg)

(All specifications and designs subject to change without notice.)



Partners: Avytechno Indonesia,
Techlogic Thailand, Westek Malaysia,
Tritronics Philippines, Utama Australia



AVI PRECISION ENGINEERING PTE LTD

1, KALLANG SECTOR #04-03, SINGAPORE 349276. TEL: 65 67483866 FAX: 65 67484810

Email: avipre@avipre.com.sg

Company Reg No: 199300584 M

Website: <http://www.avipre.com>

Skype: avipre